



Corporate Office: Unit No. B-107, Business Complex, Elante Mall,
First Floor, Industrial Area, Phase-1, Chandigarh.

Site Office: SUSHMA Capital, Peer Mushalla, Zirakpur.

DISCLAIMER: All the plans, designs, images, specifications, dimensions, facilities and other details herein are purely indicative in nature and the intended recipient should note that these are to be treated as purely provisional and informative and as such only tentative subject to approval from respective authorities. We reserve the right to modify / change / amend / alter any of the aforesaid in the best interest of the development without prior intimation / notice and without any obligation. The content herein should not be constructed as an offer / invitation to offer / contract. Any party desirous / interested in the project need to enter into agreement for sale and the development / transaction shall be governed by the terms and conditions of the agreement for sales. The printed material inter alia images, content therein is for representative purpose only. This is not a Legal Offering.



SIP, SHOP, AND STROLL

Le Européen Style



Le paradis for Shopaholics

GET READY TO EXPERIENCE EUROPEAN STREETS IN YOUR NEIGHBORHOOD. SUSHMA CAPITAL IS ZIRAKPUR'S FIRST EUROPEAN-STYLE, LOW-RISE GALLERIA MARKET ESTABLISHED TO CATER TO YOUR EVERYDAY NEEDS AS WELL AS YOUR SPECIAL REQUIREMENTS. HERE AT SUSHMA CAPITAL, YOU WILL FIND EVERYTHING - FROM SHOPPING MARTS TO MULTI-CUISINE RESTAURANTS, SPA AND SALONS TO ENTERTAINMENT PLACES.

COME, BE A PART OF ZIRAKPUR'S NEW FAVORITE RETAIL ADDRESS.





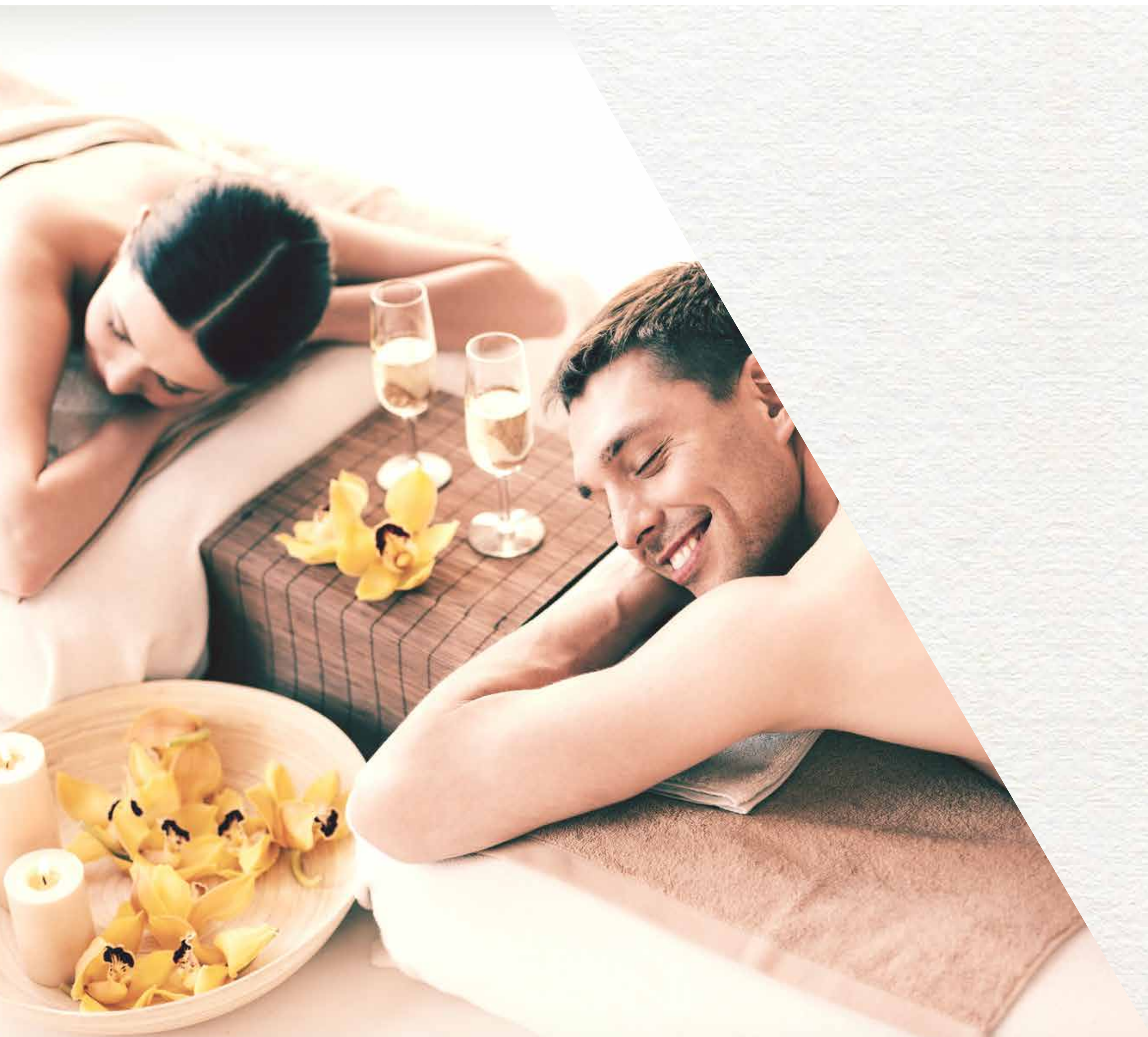
La capitale de Attractions



LA CAPITALE WHERE MULTI-CUISINE
MENUS HAVE EVERYTHING FOR EVERYONE

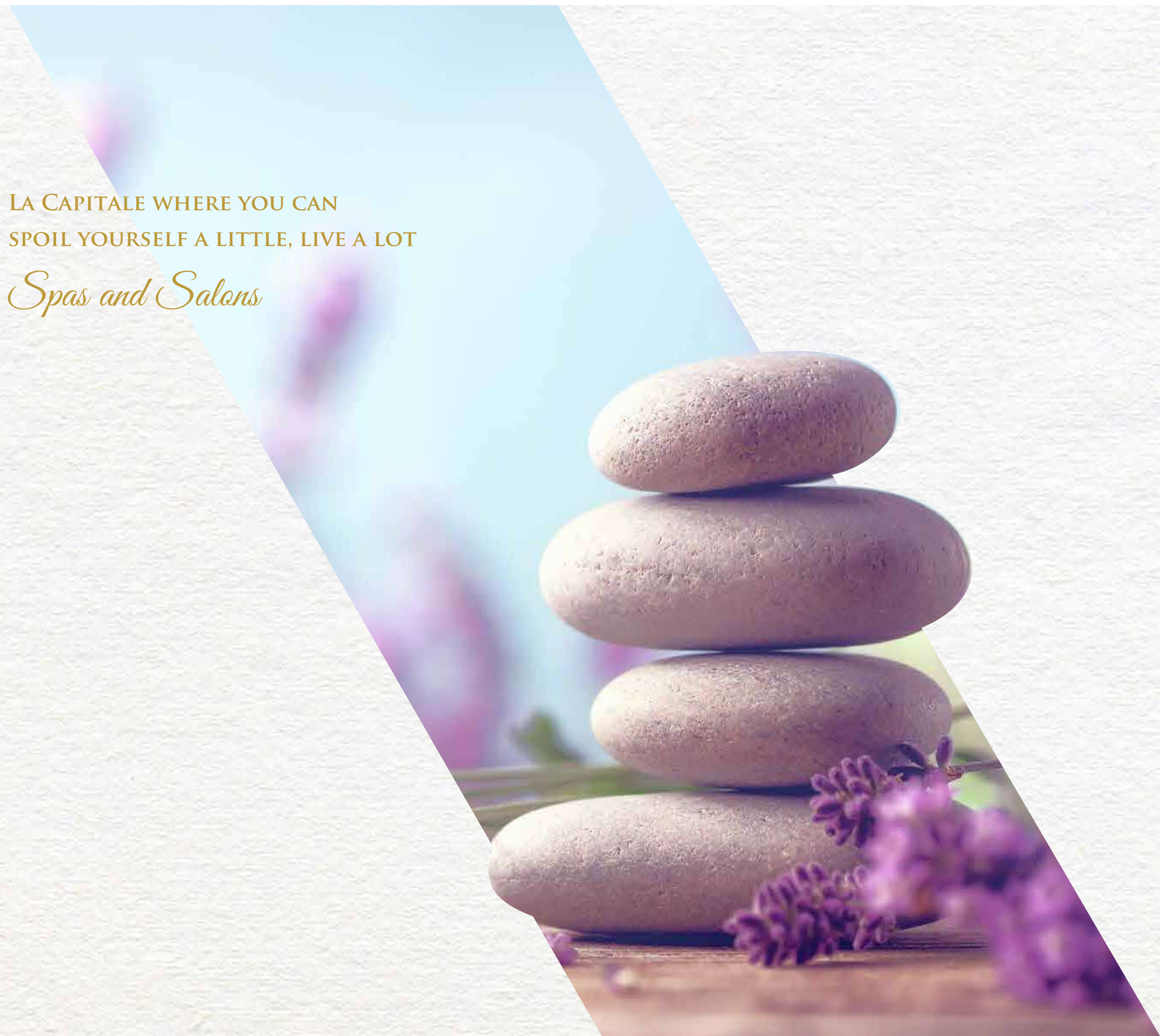
Restaurants and Dine-out Centers





LA CAPITALE WHERE YOU CAN
SPOIL YOURSELF A LITTLE, LIVE A LOT

Spas and Salons



LA CAPITALE WHERE YOU CAN RUN
OUT OF TIME BUT NEVER OUT OF FUN
AND ENTERTAINMENT.

Live events & Entertainment Center





LA CAPITALE THAT BRINGS THE BEST OF BOTH WORLDS TO YOU
World-class Exhibitions and Glocal Flea Markets





LA CAPITALE WHERE EVERY OFFICE COMES WITH A VIEW

Offices and Business Meeting Spaces



LA CAPITALE WHERE YOU CAN SCULPT
YOUR BODY AND ELEVATE YOUR SPIRIT

Ultra-modern Fitness Centers











Highlights

EUROPEAN STYLE LOW-RISE GALLERIA

SPRAWLED OVER 6 ACRES

MORE THAN 350 STORES

HUGE PARKING SPACE WITH A
CAPACITY OF 400 CARS

SKY-BRIDGE CONNECTIVITY





LA CAPITALE WHERE GREAT PEOPLE
COME TOGETHER.

Exclusive Clubhouses



Lower Ground Floor Plan



- 14'-9"x60'-0"
- 14'-9"x45'-0"
- 14'-9"x30'-0"

Upper Ground Floor Plan



- 14'-9"x60'-0"
- 14'-9"x45'-0"
- 14'-9"x30'-0"

First Ground Floor Plan



Specifications

LIVING / DINING ROOM

- VITRIFIED / CERAMIC TILES
- LONG-LASTING EMULSION WALLS
- POWDER-COATED ENGINEERED ALUMINUM WINDOWS AND DOORS
- WOODEN SKIN INTERNAL DOORS
- SECURE MORTISE LOCKS
- PREMIUM MODULAR SWITCHES

MASTER BEDROOM

- IMPORTED WOODEN FLOORING
- LONG-LASTING EMULSION WALLS
- POWDER-COATED ENGINEERED ALUMINUM WINDOWS AND DOORS
- WOODEN SKIN INTERNAL DOORS
- SECURE MORTISE LOCKS
- PREMIUM MODULAR SWITCHES

TOILETS

- ANTI-SKID CERAMIC TILES
- DESIGNER CERAMIC TILES
- POWDER-COATED ENGINEERED ALUMINUM WINDOWS
- WOODEN SKIN INTERNAL DOORS
- SECURE MORTISE LOCKS
- PREMIUM MODULAR SWITCHES

OTHER ROOM (S)

- VITRIFIED / CERAMIC TILES
- LONG-LASTING EMULSION WALLS
- POWDER-COATED ENGINEERED ALUMINUM WINDOWS AND DOORS
- WOODEN SKIN INTERNAL DOORS
- SECURE MORTISE LOCKS
- PREMIUM MODULAR SWITCHES

STANDARD FEATURES

- MODULAR WARDROBES AND KITCHEN
- DOUBLE BOWL SS SINK AND GRANITE COUNTER TOP
- POWER BACKUP
- WEATHERPROOF EMULSION / TEXTURE PAINT ON EXTERIOR WALLS
- MS RAILING IN BALCONY AND STAIRCASE
- BRANDED SANITARY FIXTURES IN TOILETS
- BROADBAND READY

