









# SUSHMA DOWNTOWN FOR RICHER COMFORT AND CONTENTMENT

As part of a 260-acre organised project approved by the Govt. of Punjab and with the picturesque Shivalik hills as the backdrop, residents will enjoy a pleasant view throughout the year. The project is situated on a National Highway connected to the airport, and on the cusp of highways that lead to Chandigarh, Delhi, Shimla, Haryana and Punjab. It has a 4-acre park within the township with walking & cycling tracks and all of it is illuminated by automated lighting. There is an efficient water and waste management system, with the entire city managed by an expert facility management team. Its wide and clean internal roads lined with trees are free from street vendors and erratic expansion, making it a pleasant place to be.



Image and accessories shown are for illustrative purpose only and not a part of standard specifications of the unit



# SUSHMA DOWNTOWN

## A GREEN CITY THAT'S COMPLETE IN ITSELF

SUSHMA Downtown is envisioned to be a one-of-its-kind integrated city. It considers clean air, water & energy and economic, social and environmental sustainability as basic necessities. Through the use of eco-friendly materials, IT connectivity & digitalisation, e-management, and citizen participation, it will create an environment that ensures a great quality of life.

Spread over 60 acres, SUSHMA Downtown is located on the National Highway connecting it to the airport. Designed and planned by world renowned architects and planners - R204 from USA and M/S Subhash & Associates - the township comprises of four state-of-the-art projects; SUSHMA Valencia, SUSHMA Belleza, SUSHMA Empiria and SUSHMA Metropol.



Image and accessories shown are for illustrative purpose only and not a part of standard specifications of the unit



# SHEER MAGNIFICENCE IN ALL ITS GLORY

Your business. It impacts the country. It impacts the world. Running it requires more than just space. It requires being accessible, and having the peace of mind for your incessant focus. At SUSHMA, we understand this really well. That's why, we offer large business spaces and corporate suites with all the facilities an international business demands.



Image and accessories shown are for illustrative purpose only and not a part of standard specifications of the unit



# LOVE FOR GRAND ENTRANCES

The address says a lot about your business. SUSHMA ensures it speaks all the right things right at the very beginning. Its artistically designed spacious lobby and waiting lounge attended by well-trained staff makes a great impression on clients. Rest assured of a 5-star experience each time a client walks in.

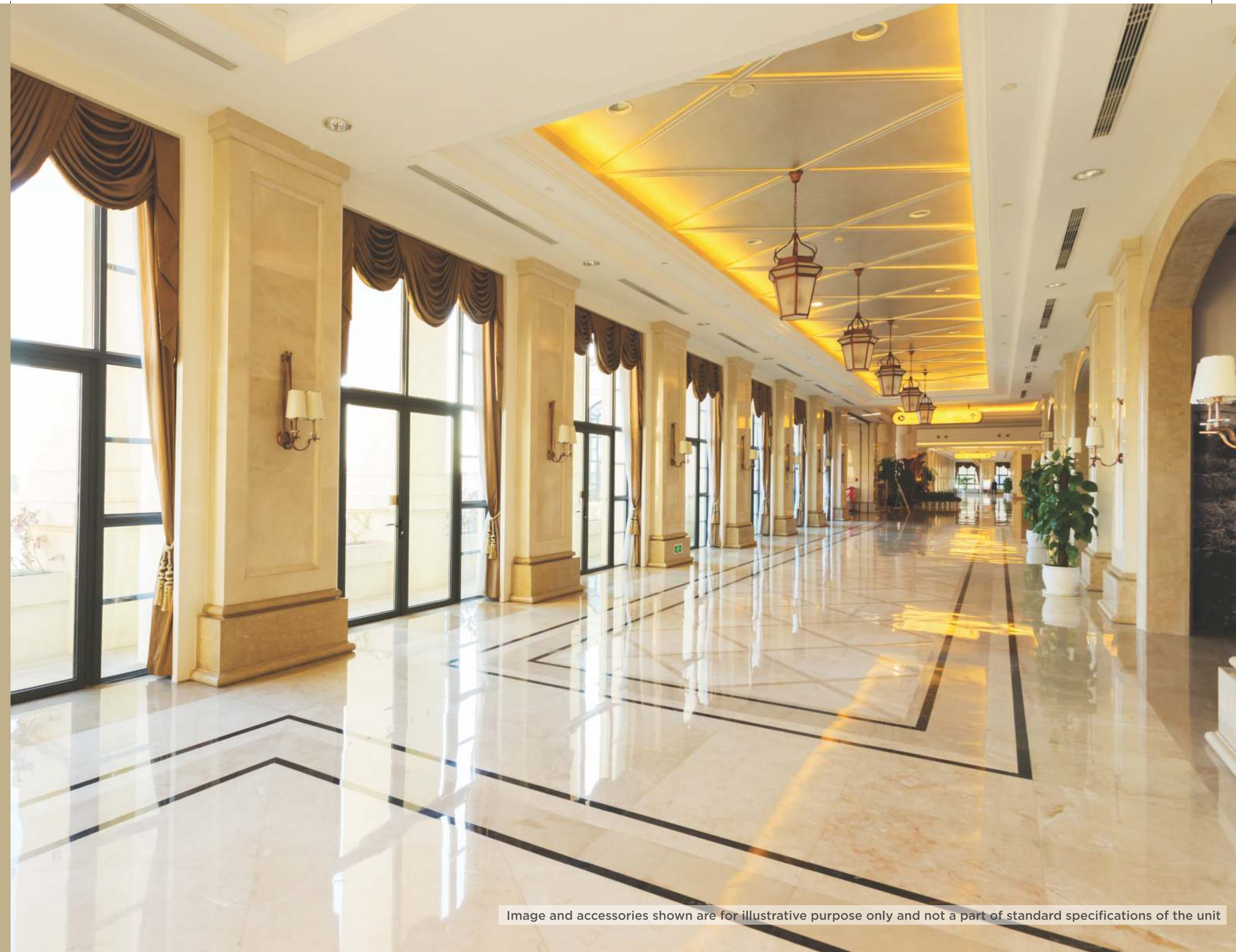


Image and accessories shown are for illustrative purpose only and not a part of standard specifications of the unit



# LUXURY MEETS TECHNOLOGY

Buildings today are not just about bricks and mortar. They are about technology. You'll see this in SUSHMA commercial spaces. The entire team is connected, to ensure speed of action. The entry sports the latest scanners. Multiple sensors are spread across the premises. Intuitive technology, like smart grouping and destination-based model, reduces the commute time and makes it extremely convenient for clients.

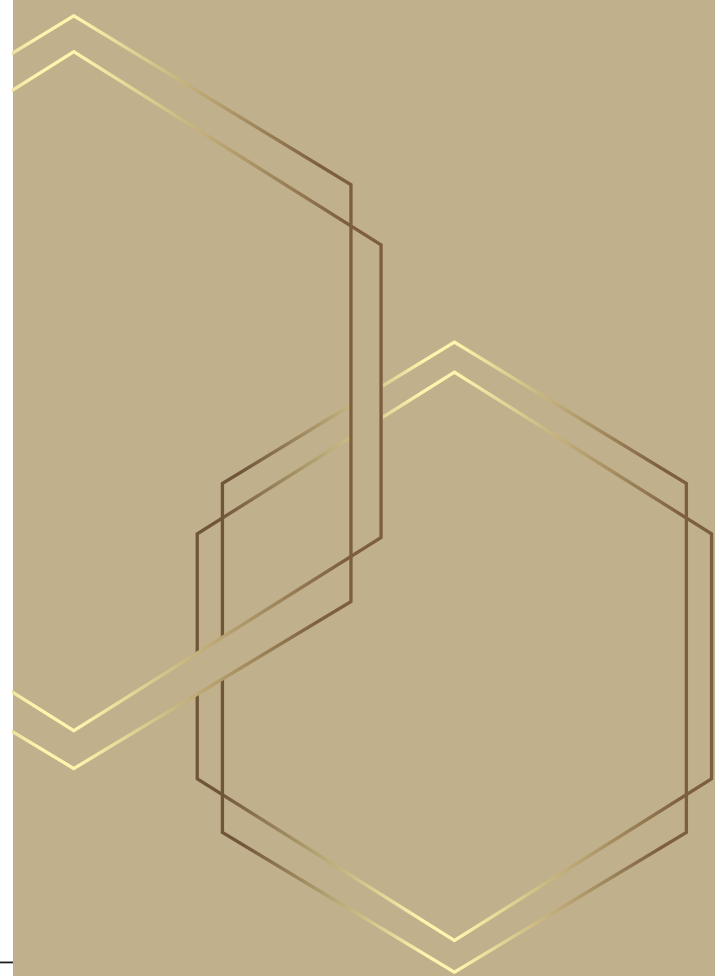


Image and accessories shown are for illustrative purpose only and not a part of standard specifications of the unit



# DESIGNED FOR GREATER GOOD

Businesses have a responsibility towards society and the environment. Having a business space in an environment-friendly building is the first step towards fulfilling this responsibility. SUSHMA Metropol, being a green building, ensures maximum resource utility as well as minimum impact on the environment. It promises enhanced indoor air quality as well as a reduced carbon footprint.



Image and accessories shown are for illustrative purpose only and not a part of standard specifications of the unit



# AMBIENCE THAT RADIATES OPULENCE

The visual impact of a space and the experience that it provides can often be the most lasting impression of any business housed there. This is why we have partnered with world renowned architects and design firms to incorporate the newest infrastructure. This ensures that our business spaces are futuristic in design and functionality. Great ergonomics, a pleasant, happy and colourful working environment, and a host of amenities are the hallmarks of all SUSHMA business spaces.



Image and accessories shown are for illustrative purpose only and not a part of standard specifications of the unit



# SPACE FOR BIGGER ASPIRATIONS

When all the peripherals around businesses are taken care of, focusing on core strengths expedites growth. At SUSHMA, we have taken care of this part of business. We ensure that the entire infrastructure is functioning at its peak all the time, so that professionals are at their efficient best.

From welcoming lobbies to properly manned multi-level parking and from clean & hygienic restrooms to a well-maintained landscape, we have covered it all, all the time.



Image and accessories shown are for illustrative purpose only and not a part of standard specifications of the unit



# LUXURY MADE LUXURIOUS

Luxury is the grandest way to make a statement, whether it be with your home or your business. We have taken luxury and made it even more luxurious. We have built an integrated space where business will be exciting yet peaceful. International cafes, multi-cuisine restaurants, the best retail brands, and premium residential homes are within the township. It'll be business like never before.

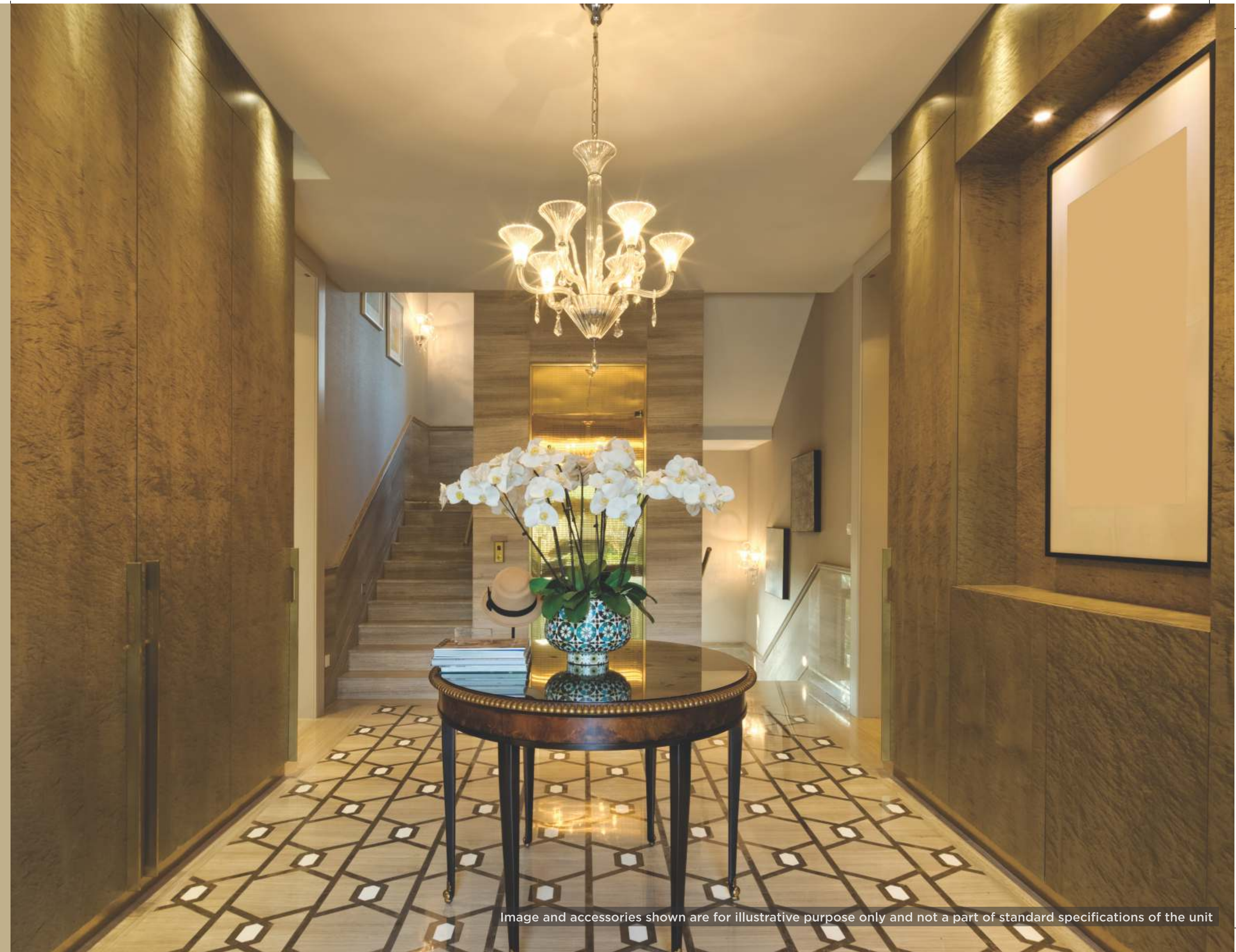
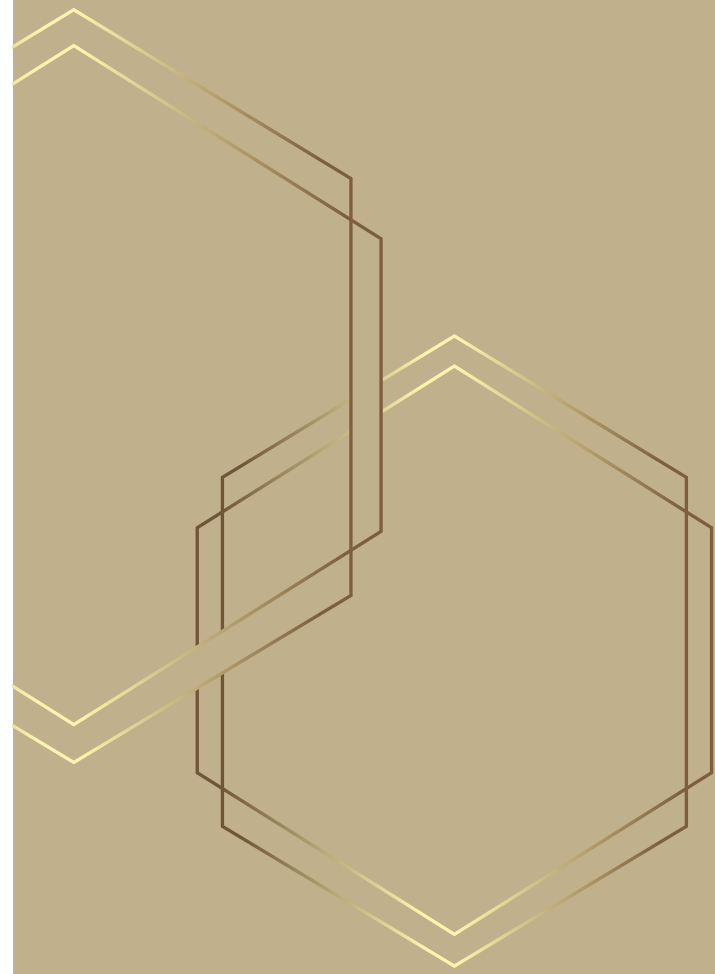


Image and accessories shown are for illustrative purpose only and not a part of standard specifications of the unit



# WALK AMIDST CLOUDS EVEN THE SKY'S NOT THE LIMIT

Your business workplace reflects your sheer determination towards your success. Metropol is designed to elevate that determination to a level where it touches the sky, literally.

Metropol is the region's only commercial property that has twin towers connected with a Skywalk. Its marvellous architecture makes you realise that you don't just own an office space here but a piece of sky itself.





# SUSHMA METROPOL EXTRAVAGANT IN AFFLUENCE

SUSHMA Metropol is the next generation commercial space at SUSHMA Downtown. Located on the National Highway connected to the airport, it sports the Tricity's first twin towers. It has been thoughtfully designed keeping in mind the requirements of new age businesses with big ambitions. SUSHMA Metropol offers world class business centres, SOHO suites and co-working spaces with a mix of fine dining, QSR, fashion retail, anchor stores and food courts. Thanks to its grand 650-feet wide frontage, SUSHMA Metropol offers a warm welcome to all.



Artistic impression for illustrative purpose only and not a part of standard specifications of the project









**Site Office**

SUSHMA Metropol, SUSHMA Downtown,  
PR 7, Airport Ring Road, Zirakpur.

**Corporate Office**

Unit No. B-107, Business Complex, Elante Mall,  
First Floor, Industrial Area, Phase-1, Chandigarh.